

Congratulations on your purchase of an Ablemouse!

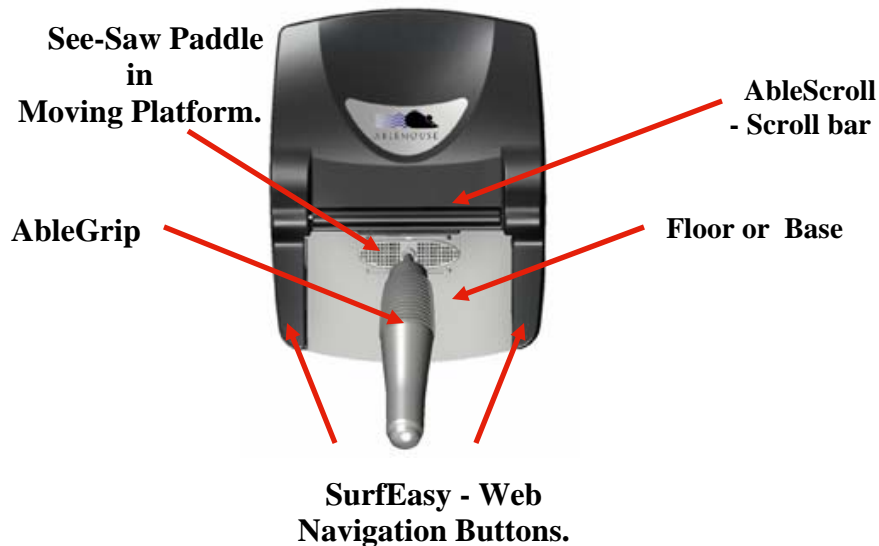
The Ablemouse is a unique new pointing device designed for all computer users to help combat computer related strain. What makes this product one of a kind is its ability to target the two main causes of computer discomfort.

- The Ablemouse lowers strain by requiring only 5% of the work required to move a standard mouse.
- The Ablemouse also lowers specific muscle pain by allowing for constant adjustment of hand positioning during use.

Just plug your Ablemouse into your computer and begin using it today to feel the difference.

For more information take a look at the AbleGrip catalogue that shipped with your product or see it all online at www.ablemouse.com.

What is that part called again?



How to start using and understanding your Ablemouse!

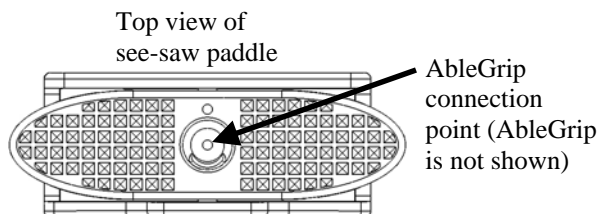
1. Plugging in Your Ablemouse:

Connect the Ablemouse plug to any available USB port on your computer. Hold the AbleGrip lightly, without lifting it, so that the AbleGrip and paddle are sliding on the base. When you move the AbleGrip and its paddle, the cursor will move. It is a special feature of the Ablemouse that the cursor will only move when the paddle is flat on the base. When you lift the moving part of the Ablemouse away from its base the cursor on the screen will stop moving. This lets you reposition the AbleGrip and continue in the direction you want.

Move the AbleGrip around a bit now, and see if the cursor moves. If it doesn't, unplug the Ablemouse and then put the plug back in again. Some computers require this "double plugging" when a new pointer device is first introduced.

2. Attaching Your AbleGrip:

If you have not done so already, attach your AbleGrip to the moving platform. Hold the paddle flat with the arrow facing the body of the Ablemouse. Notice the two short axles sticking out from the short sided of the paddle. Tip the paddle so you can insert the axle closest to you in its slot in the middle of the lower wall of the paddle enclosure and press it down gently. Holding it there press the side away from you down until it clicks in.



3.

Moving Ablemouse and Avoiding “Blocks”:

The Ablemouse takes a little practice. When the AbleGrip won't move where you want it to, it is almost always because the paddle has hit one of the four sides of the base. When you lift the moving part of the Ablemouse away from its base the cursor on the screen will stop moving, this lets you reposition the AbleGrip and continue in the direction you want. So just “pick up” the AbleGrip a little bit, move it back a ways, let it down again and continue.

Some users find it useful to center the cursor. Try moving the cursor so that it hits each side of the screen one after the other (in any order). This centers it so that it will not hit the side of the screen or the side of the platform's moving space as often.

NOTE: Check your “Speed” setting. The cursor should move all the way across the monitor screen when you move the AbleGrip and its paddle about three-quarters of the way across the base. If it doesn't, increase the “Speed” setting in the “Mouse Properties”. Just go to the “Start” menu, then the control panel and click on “Mouse” to find the speed setting. For more information on this see the Trouble Shooting portion of this guide.

4.

Performing clicks with your Ablemouse:

To Replicate the LEFT CLICK of a Standard Mouse: Press the tip of the AbleGrip straight down. Keep holding it down to draw, drag or highlight. Alternately, use your external remote click button

To Replicate the RIGHT CLICK of a Standard Mouse: Press down on the right side of the little surfboard-shaped see-saw paddle at the tip of the AbleGrip. Be careful not to push the AbleGrip down for a Left Click at the same time.

To Replicate the SCROLL (Middle Click) of a Standard Mouse: To do an easy scroll, click down on the left side of the see-saw paddle. A black circular icon will appear. Move the icon up or down the page to scroll. To stop scrolling, just click down with the AbleGrip.

Standard Mouse	Ablemouse
Left Click	Click straight down or alternatively use the external remote left click button. (see below)
Right Click	Click down on right side of see-saw paddle
Scroll	Click down on left side of see-saw paddle

Special feature: Remote Left Click Button

The Ablemouse comes with a remote left click button. This allows you to move the cursor over a point with your AbleGrip but click with the other hand. This provides much greater precision when using programs like Photoshop. Just plug it in to the back of your Ablemouse.

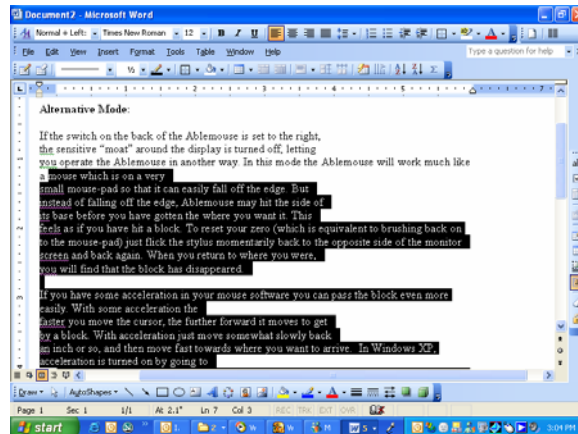


5.

Dragging or Highlighting:

To draw a line, drag an icon or highlight text, hold the AbleGrip down continuously while performing the action just as you would with a standard mouse. If you are highlighting a large section start at the bottom right of the base to highlight upward or at the top left of the base to highlight downward. This will allow you to highlight the maximum area. As the cursor hits the top or bottom of the document, it will put you in scroll mode if the document is more than one page.

You can also use the remote left click button to scroll. Just scroll with your AbleGrip while holding the remote left click button down. This way you can lift and move back the cursor (just like you would lift and move a mouse) to continue highlighting.



Note: If you hit a block and your computer supports cursor acceleration, then slowly move the cursor back, then move it quickly in the direction you wish to move. This will help the cursor move further.

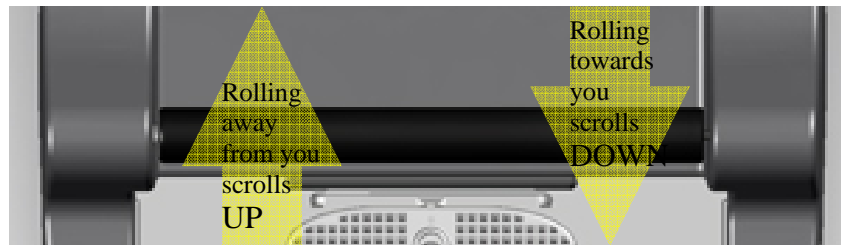
6.

Using the new AbleScroll Scroll Bar.

The AbleScroll scroll bar is an improved version of the scroll wheels found in traditional computer mouse designs. The bar has been widened to allow it to be controlled easily by any part of a user's hand. Additionally the AbleScroll bar has been made very easy to turn allowing for minimum amount of work needed for its use.

To use the AbleScroll simply roll your hand over the bar causing it to spin towards or away from you. Rolling the AbleScroll bar towards you will scroll down a page on your computer while rolling the AbleScroll away from you will scroll up a page on your computer. On certain applications the scroll bar may also be used to zoom in and zoom out on the screen.

The AbleScroll bar is particularly useful when viewing web pages or reading large documents. It is also an important tool for many programs.



7.

Using the SurfEasy Web Navigation Buttons.

The Ablemouse comes with two new buttons that help you navigate while you are surfing the internet. These buttons allow you to navigate forward and back between the web pages that you are viewing.

The SurfEasy buttons are located on the roof of the Ablemouse to the left and right of the Ablemouse logo.

The right hand button is the “Forward” button. Clicking this button is the same as clicking the forward button in your web browser and will navigate forward one page in your browser history.

The left hand button is the ‘Back’ button. Clicking this button is the same as clicking the Back button in your web browser and will navigate one page back in your browser history.



SurfEasy ‘Back’ button.
Clicking this will navigate back one page in your browser history.

SurfEasy ‘Forward’ button.
Clicking this will navigate forward one page in your browser history.

8.

Alternative hand positions:

You don't have to grip the AbleGrip. You can just put one finger on each side of the AbleGrip tip. Replicate the Left Click of a standard mouse by pressing down with both fingers at once. Do a right click by pressing down with the right finger only and perform a Scroll Click with the left finger.



If you use a Right Click a lot, it is easy to use the AbleGrip without moving your fingers at all. Just hold the AbleGrip naturally and put the tip of your index or middle finger on the moving platform near the AbleGrip tip. That finger will act as a fulcrum so that if you tip the AbleGrip a little to the right, it will do a Right Click very fast and easily with only a barely perceptible motion.



If you use scrolling a lot try using your thumb to push down on the left side of the platform.



Recline in your chair and put the Ablemouse on your knee for a relaxed computing experience.

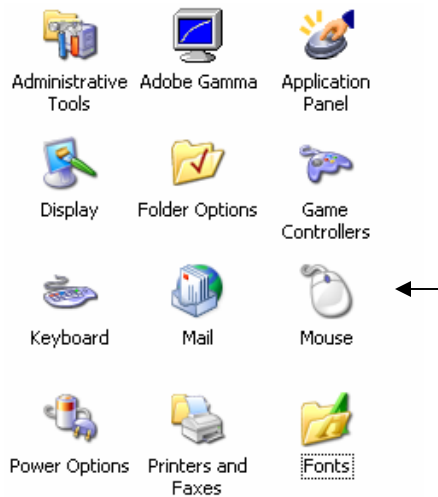
TROUBLE SHOOTING

Problem: My cursor does not move far enough across screen and I have trouble double clicking.

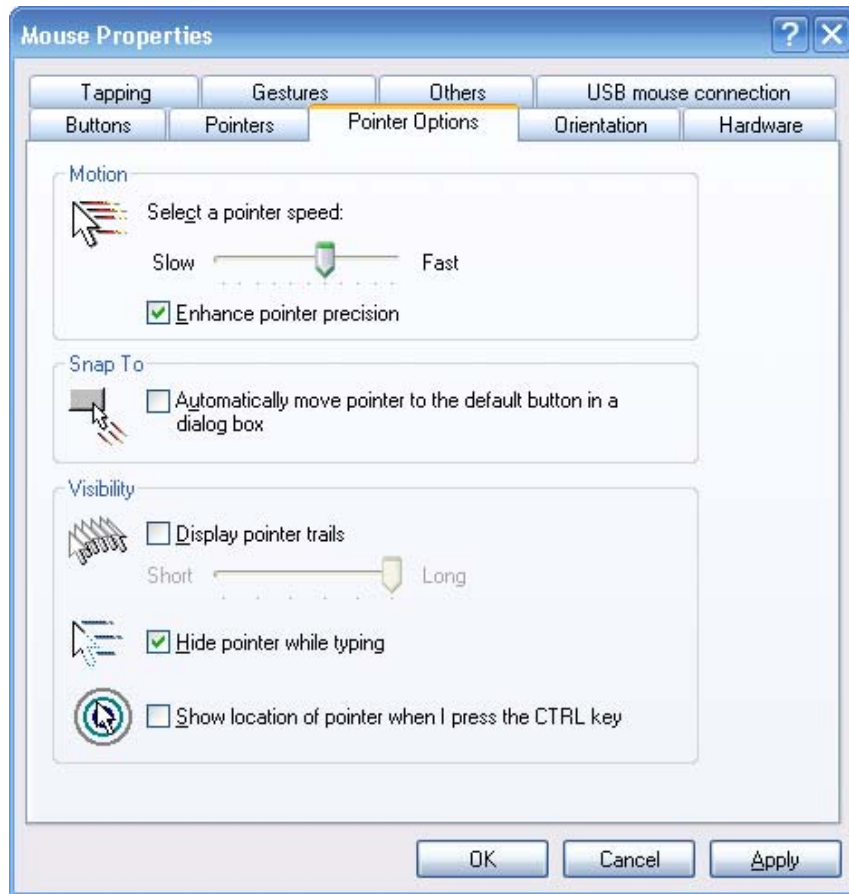
Solution: Try changing your computer settings.

Windows XP or Vista

1. Go to your Start Menu, then click and open Mouse in your Control Panel.



2. Click on the Pointer Options tab on the mouse menu and set your pointer speed about five tics to the left of “Fast”. (See note below)

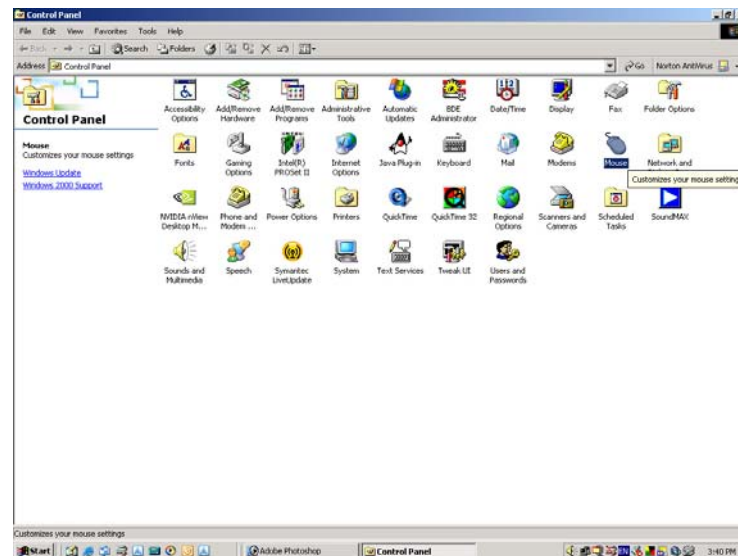
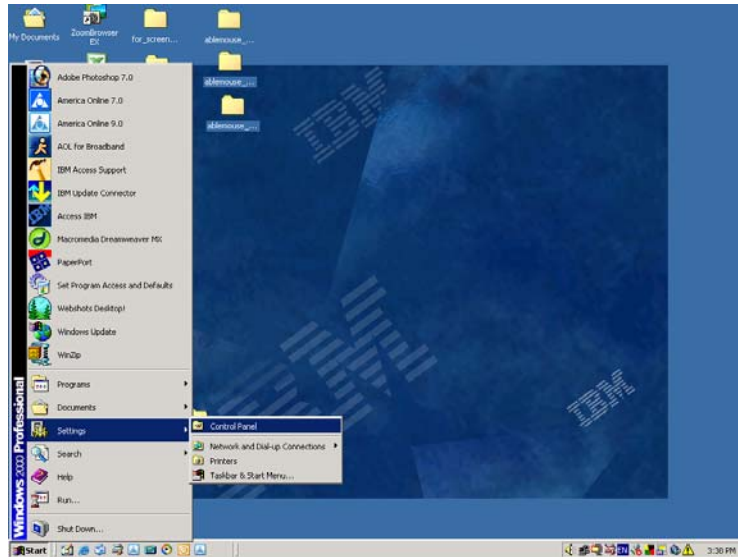


3. Make sure the "Enhance pointer precision" is checked. (See note below.)

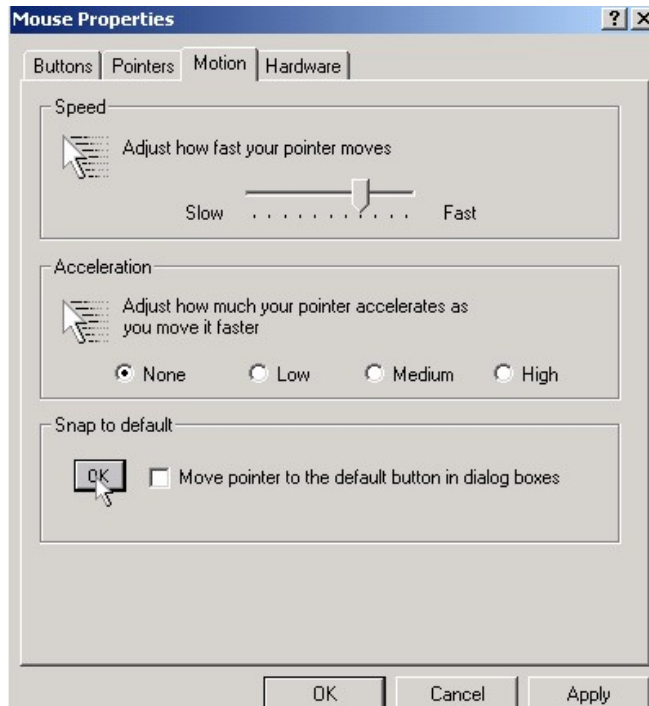
NOTE: You will need to change the settings in your control panel to find what feels best for you depending on the resolution of your monitor and/or the width of your screen. Both the “speed” and “acceleration” affect the movement of the Ablemouse. The higher resolution monitor or the wider your screen, the faster you will need to set your speed. You can test this by seeing if the cursor crosses your entire screen when the Ablemouse AbleGrip is moved approximately three quarters across its base. Checking the “enhance pointer precision” or setting the “acceleration” to low will help to keep the cursor stable while clicking on small icons or areas.

Computer Settings - Windows 2000, NT and Earlier

1. Go to your Start Menu, then click and open Mouse in your Control Panel.



2. Click on the Motion tab, and set your pointer speed four ticks to the left of “Fast” and the “Acceleration” to “low”. (See note below.)



NOTE: You will need to change the settings in your control panel to find what feels best for you depending on the resolution of your monitor and/or the width of your screen. Both the “speed” and “acceleration” affect the movement of the Ablemouse. The higher resolution monitor or the wider your screen, the faster you will need to set your speed. You can test this by seeing if the cursor crosses your entire screen when the Ablemouse AbleGrip is moved approximately $\frac{3}{4}$ across its base. Setting the “acceleration” to low will help to keep the cursor stable while clicking on small icons or areas.

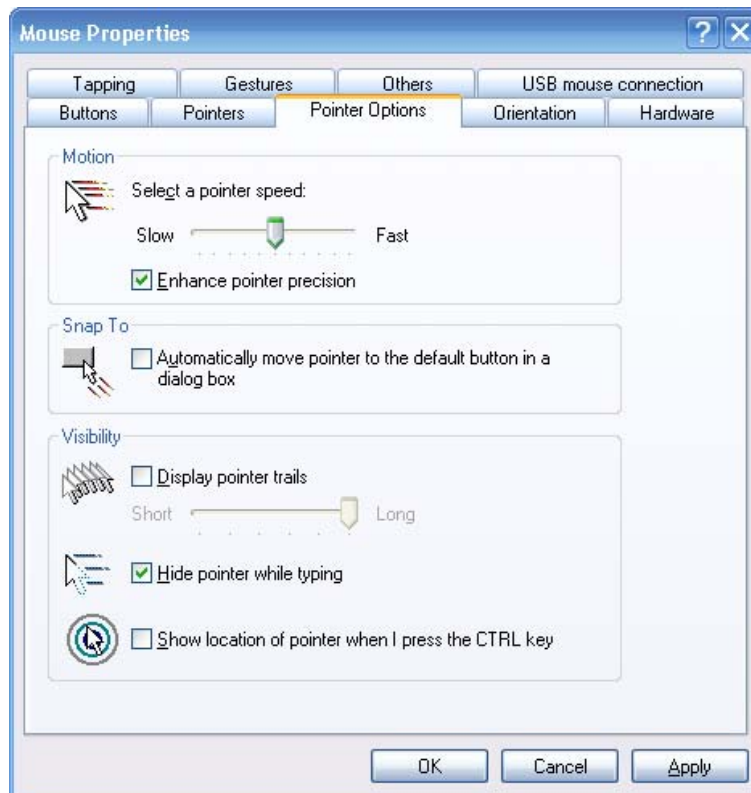
Computer Settings - Mac OSX and higher

To change your mouse settings when using with Mac OSX you will need to download the driver MouseZoom which is available through a link on the purchase page of our website www.ablemouse.com. Check your “Speed” setting. The cursor should move all the way across the monitor screen when you move the Ablemouse AbleGrip and its paddle about three-quarters of the way across its moving space.

Problem: I need more precision when using a program like Photoshop.

Solution: Adjust the pointer speed. Check the “Enhance pointer precision” box.

The “Speed” adjustment in the “Mouse Properties” gives you a choice. If the Speed is set high, it is easier to stay within the working zone. You don’t have to lift so often to stay in the working zone, but you will have a little less precision. If you need high precision (as with Photoshop) you can get it by setting the speed lower. Just for practice, try setting speed at the midpoint of the slider. You will get much higher precision but you may have to “lift and let down” several times to get across the whole screen. This will slow you down if you are working across the whole screen, however if you are working only in a particular section of the monitor screen, (as in some parts of Photoshop) blocks won’t happen often and the increased precision will be well worth it. Select the speed you like most for your usual jobs.



Problem: My Ablemouse base is too slippery and makes it hard to double click.

Solution: Increase the friction between the moving platform and its floor.

If the floor of the Ablemouse is too slippery, it can make it harder to double click. This may happen because of dust or because of oil from your hands. There are two ways to help solve this problem. You can reset your double-click in your Microsoft software to a slower setting, or you can make the floor a little bit sticky so that it is easier to double-click without moving the cursor by mistake. To make it less slippery, just clean the base as you would any normal plastic surface being careful to stay away from the electronic components

Problem: I want my Ablemouse to move more easily over the base.

Solution: Decrease the friction between the moving platform and its floor.

To make the Ablemouse movement more slippery, simply shake a small amount of Talcum powder onto a soft cloth, and wipe the floor that the platform moves on with the powder. Follow this up by taking another clean soft cloth and carefully polishing the floor until you can't see the powder.

Problem: My AbleGrip popped out of the moving platform.

Solution: Replace the AbleGrip.

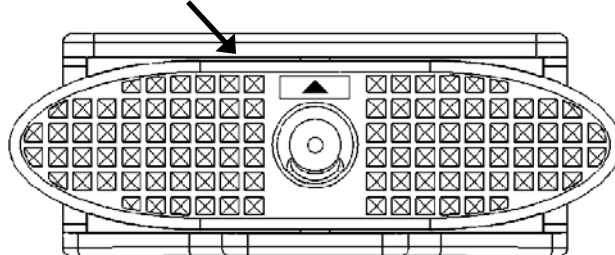
The Ablemouse can accommodate a full range of interchangeable grips with a “snap in paddle” design. The paddle on an Ablemouse is the little see-saw which holds the tip of the AbleGrip. Sometimes a user will inadvertently pop the see-saw paddle out.

You will need the tool that was shipped with your Ablemouse or any other similar tool, like a nail-file or a small flat head screw-driver.

- (1) Hold the paddle flat with the arrow pointing away from you.
- (2) There are short axles sticking out from the short sides of the paddle. Tip the paddle so that you can insert the axle which is on your side into its slot in the middle of the lower wall of the paddle enclosure.
- (3) Holding it there, press down the arrow side of the paddle until it snaps down into place. The paddle should rotate slightly but otherwise be held firmly in the cradle.
- (4) To remove an AbleGrip, insert the Tip of the tool provided in the gap between the paddle and the wall. Pull the AbleGrip away while twisting the tool until the AbleGrip snaps free.

Paddle viewed from above

Insert Tool Between the Paddle and the Wall



Note: To see what AbleGrips are available please visit our website at www.ablemouse.com or take a look at the AbleGrip catalogue that came with your Ablemouse.

The Ablemouse Guarantee

We want you to be happy with your new Ablemouse. After your purchase should you have any questions, please call us at our toll free number 800 262 1959, during normal business hours (PST) or send an e-mail to info@ablemouse.com.

Ablemouse One-year Warranty

If during normal usage your Ablemouse develops any problems, return it to Westing Software within one year of purchase and we will repair or replace it at our discretion for no additional charge.

Satisfaction Guaranteed

If you are not satisfied with your Ablemouse, return the unit for a full refund within the first three months after purchase.

Your Ablemouse comes with 3 AbleGrips.



Original AbleGrip: The original AbleGrip. The wide grip allows for a relaxed hand position. Click on the right side of the platform for a “right” click and on the left side to scroll.



The Thin AbleGrip: Created for users who prefer the feel of a standard pencil or pen. The clicking works just like the Thick AbleGrip.



Thick Tower AbleGrip: Rotating AbleGrip is easy to grip and allows for a range of hand positions with tilt-clicking ability.

See our AbleGrip Catalogue for more custom AbleGrips available by special order.

NOTES:

Visit us on the Web at www.ablemouse.com

or

Call us at 415-256-9134



Westing Software, Inc.

41 Salinas Avenue
San Anselmo, CA 94960
Tel: (415) 256-9134/(800) 262-1959
Fax: (415) 256-9134